



Creating a Better Future



TOUGH WORLD. TOUGH EQUIPMENT.

Liuzhou Liugong Forklift Co., Ltd.
No. 1 Yanghe Avenue, Yanghe Industrial
New Zone, Liuzhou City, Guangxi
Zip Code (P): 545006
Sales Hotline (T): 0772-2040713
Service Hotline (T): 0772-2040720/ 0772-2040721
E-mail (E): liugonglrs@liugong.com
Website (W): www.lgforklift.cn



Official website



Media Platform

LG-PB-CPCD30/35E -0823EN

The Liugong series of logos herein, including but not limited to word marks, device marks, letter of alphabet marks and combination marks, as the registered trademarks of Guangxi Liugong Group Co., Ltd. are used by Guangxi Liugong Machinery Co., Ltd. with legal permission, and shall not be used without permission. Specifications and designs are subject to change without notice. Illustrations and pictures may include optional equipment and may not include all standard equipment. Equipment and options varies by regional availability.

Engine Xinchai
Fuel Diesel
Rated load 3000-3500 kg
Rated Power 40 kW

CPCD30/35E
E SERIES INTERNAL COMBUSTION
COUNTERBALANCE FORKLIFT

TOUGH WORLD. TOUGH EQUIPMENT.

PRODUCT DESCRIPTION

E series forklift products are a new generation of internal combustion counterbalance forklift products, newly developed by LiuGong according to market demand, used new industrial design and advanced technology, with green energy saving, reliable and stable, comfortable control, strong adaptability to working conditions.

RELIABLE AND STABLE

- Fully upgraded power system;
- Structural component strength upgraded;
- Steering system reliability upgraded.

NEW APPEARANCE

- Overall strong and more powerful;
- Counter weight with safety reflective label.



STRONG AND DURABLE

- Optimize the overall layout and improve the stability of heavy-load operation;
- Stronger and powerful Mast;
- Heavy duty steering axle.

COMFORTABLE

- Ergonomic layout;
- Small diameter steering wheel;
- LED high reliability lights.

PRODUCT KEY FEATURES

RELIABLE



Large flow air filter

- Low intake resistance, Strong engine respond;
- Filter radial and axial double seals, intake air is cleaner.



Sealed hood

- Engine hood installed with hidden;
- The rubber strip at the rear of the engine hood is always sealed, it can prevent tool and other object go into engineer compartment.



Integral steering column

- Steering column connect to Steering gear directly, operate force is small;
- The steering column is sealed structure, Dustproof and waterproof, it can be used in corrosion condition.

COMFORTABLE



Increase the anti slip pedal

- Anti-slip pedal is convenient to get on/off the truck and also more safe for the driver.



Comfortable ergonomics

- 300mm steering wheel, Relieve operation fatigue;
- Optimized layout of shift handle and hydraulic lever.



LED high reliability lights

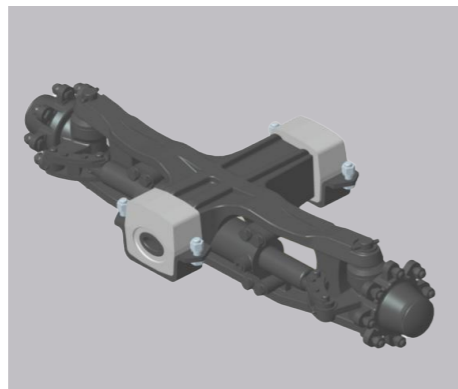
- LED luminous light beads, with higher brightness;
- White cold light source, higher luminous efficiency, service life up to 20,000 hours;
- thin and light LED turn signal;
- rear combination lamp;
- high reliability.

STRONG AND DURABLE



Super stable mast

- Tilt cylinder support high position location, good stability;
- Large overlap distance of mast, deformation during heavy load operation is small;
- Standard configured with side bearing;
- Optional super high mast up to 8.5 m;
- The distance of bearing on carriage is big, it can reduce carriage vibration.



Heavy duty cast steering axle

- High strength axle housing;
- The steering knuckle adopted cylindrical roller bearing, Strong impact resistance;
- Installed with rubber damping, it can reduce vibration.



Reinforced frame

- 12mm fender with dual fender install hose;
- Integral stamping frame tail, structure is strong;
- High strength frame can meet the strength requirements of different attachment.

STANDARD SPECIFICATIONS

POWER SYSTEM

- xinchai c490BPG
- Integral cast damping steering axle
- Single filter
- Mid position exhaust

HYDRAULIC SYSTEM

- 2-function hydraulic valve
- Constant distribution steering hydraulic system

ELECTRICAL SYSTEM

- Maintenance-free battery
- LED head light
- LED front & rear combination light
- Horn
- Back-up alarm

MAST/ATTACHMENT

- 2 stage 3m mast
- 1100 carriage
- 1070 fork

OPERATION

- 300 mm steering wheel
- Integral steering gear
- Ordinary seat with seat belt
- Floor rubber mat

CHASSIS

- Mechanical transmission
- Air tires
- 1070 fork
- Manpower hydraulic brake

AVAILABLE OPTIONS

POWER SYSTEM

- 2nd refined air filter (Fine filter)
- 2nd refined air filter (Oil filter)
- Mid position exhaust with Fire-proof cap
- High position exhaust
- High position exhaust with Fire-proof cap

ELECTRICAL SYSTEM

- Rear working light
- Cooling air conditioner
- Heater
- Warning light
- Area warning light (Left, right, rear)
- Blue spot light
- Reverse video
- Reverse voice alarm (English)
- Driving Recorder
- Travel speed limiter

MAST/ATTACHMENT

- 2 stage 2-6m mast
- 2 stage 2.5-3.5m FFL mast
- 3 stage 3.6-8.5m FFL mast
- 1220-2440 fork
- Optional wider carriage
- Side shifter
- Side shifter fork positioner
- Hinged broke handler
- Carton clamp
- Paper clamp
- Bale clamp
- Block clamp
- Push/Pull
- Single-Double pallet handler
- Fork sleeve
- Boom

OPERATION

- OVH guard (Shorter 100mm)
- Cab
- Semi-suspension seat
- Full suspension seat
- Three Rear view mirror

CHASSIS

- Hydraulic transmission
- Electronic shift hydraulic transmission
- Solid pneumatic tire
- Dual air filled pneumatic tire
- Dual Solid pneumatic

Hydraulic system

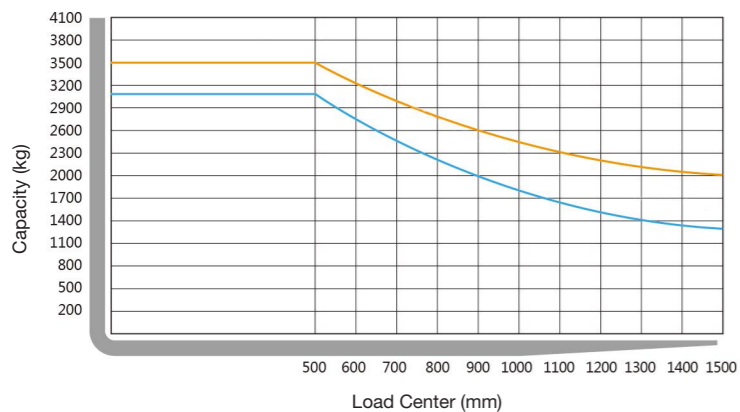
- 3-Function control valve
- 4-Function control valve

MAST AND CAPACITY INFORMATION

Mast type	Maximum Fork Height (MFH)		Mast Overall Lowered Height (OAL)		Free Lift with Load Backrest*		Mast Tilt Angle (F/B)		Rated Load Capacity		Total Weight with Standard Forks	
	3/3.5T	3T	3.5T	3T	3.5T	3T	3.5T	3T	3.5T	3T	3.5T	
	mm						°		kg @ (500mm LC)		kg	
Standard 2-Stage	3000	2110	2155	95	100	6/12	6/12	3000	3500	4260	4630	
	3300	2260	2305	95	100	6/12	6/12	3000	3450	4288	4659	
	3500	2360	2405	95	100	6/12	6/12	2750	3250	4307	4678	
	4000	2660	2705	95	100	6/12	6/12	2600	3100	4401	4780	
	4500	2910	2955	95	100	6/12	6/12	2400	2900	4448	4829	
5000	3160	3205	95	100	6/12	6/6	2200	2500	4495	4877		

Mast type	Maximum Fork Height (MFH)		Mast Overall Lowered Height (OAL)		Free Lift with Load Backrest*		Mast Tilt Angle (F/B)		Rated Load Capacity		Total Weight with Standard Forks	
	3/3.5T	3T	3.5T	3T	3.5T	3T	3.5T	3T	3.5T	3T	3.5T	
	mm						°		kg @ (500mm LC)		kg	
Full Free 2-Stage	2500	1860	3505	713		6/12		3000		4302		
	2700	1960	3755	813	863	6/12	6/12	3000	3500	4326	4607	
	3000	2110	2005	963	1013	6/12	6/12	3000	3500	4321	4630	
	3300	2260	2155	1113	1163	6/12	6/12	3000	3500	4351	4661	
	3500	2360	2305	1213	1263	6/12	6/12	2750	3250	4370	4675	
4000		2405										

Mast type	Maximum Fork Height (MFH)		Mast Overall Lowered Height (OAL)		Free Lift with Load Backrest*		Mast Tilt Angle (F/B)		Rated Load Capacity		Total Weight with Standard Forks	
	3/3.5T	3T	3.5T	3T	3.5T	3T	3.5T	3T	3.5T	3T	3.5T	
	mm						°		kg @ (500mm LC)		kg	
Full Free 3-Stage	3600	1855	1925	708	783	6/6	6/6	2650	3150	4463	4541	
	4000	1990	2060	843	918	6/6	6/12	2450	2950	4503	4580	
	4300	2090	2160	943	1018	6/6	6/12	2350	2950	4531	4610	
	4500	2155	2225	1008	1083	6/6	6/12	2250	2750	4550	4630	
	4700	2225	2295	1078	1153	6/6	6/12	2100	2600	4570	4646	
	5000	2325	2395	1178	1253	6/6	6/6	1900	2400	4599	4680	
	5500	2495	2645	1303	1503	6/6	6/6	1700	2200	4629	4788	
	6000	2855	2895	1528	1753	6/6	6/6	1500	1600	4679	4856	
	6500		3145		2003		6/6		1000		4970	
	7000		3395		2253		6/6		1100		5038	
7500		3645		2503		6/6		1100		5106		
8500		4135		2993		3/4		500		5288		



Note:
Vertical axle stands for load capacity while horizontal axle stands for load center, Load center is the distance counted from the front of the fork. The base point of the standard load is the center point of the cubic with the same 1000mm dimension in length, width and height. The load capacity should be down if mast tilt forward or using non-standard forks of loading goods with extra width. Please realize the different load capacity between different load centers according to load chart.

PRODUCT SPECIFICATIONS

Category	Item	Value	CPCD30-E	CPCD35-E	
General	Model		CPCD30-E	CPCD35-E	
	Power Type		Diesel	Diesel	
	Base Capacity		3000	3500	
Weights	Load Center	@ rated load center	500	500	
	Service Weight	unloaded	4260	4630	
Tires	Axle Load	loaded/unloaded, front	6450/1680	7310/1765	
		loaded/unloaded, rear	810/2580	820/2865	
Mast	Tire Type		Pneumatic	Pneumatic	
	Wheels	front / rear	44594	44594	
	Wheelbase		1760	1760	
	Tire Size	front	28 x 9 -15 -14PR	28 x 9 -15 -14PR	
		rear	6.50 - 10 -10PR	6.50 - 10 -10PR	
	Tread Width	front/rear	1000 / 980	1000 / 980	
	Max. Fork Height	with std 2-stage mast	3000	3000	
	Freelift	with std 2-stage mast	145	145	
	Height, Upright Lowered	with std 2-stage mast	2110	2110	
	Height, Upright Extended	with std 2-stage mast	4146	4146	
Chassis	Mast Tilt, Fwd/Back	with std 2-stage mast	6o / 12o	6o / 12o	
	Carriage	width	1100	1100	
	Fork Spread	minimum/maximum	272 / 1072	272 / 1072	
	Fork Dimension	T x W x L	45 x 122 x 1070	50 x 122 x 1070	
	Length to Fork Face	with std 2-stage mast	2720	2800	
	Overall Width		1225	1225	
	Overhead Guard Height		2150	2150	
	Turning Radius	minimum outside	2400	2435	
	Fork Overhang	with std 2-stage mast	474.5	479.5	
	Min.right angle stacking aisle width	add load length and clearance center of wheelbase	4141	4176	
Systems Performance	Ground Clearance	loaded/unloaded	135	135	
	Travel Speed	loaded/unloaded	140	140	
	Lift Speed	loaded/unloaded	18.5 /19	18.5 /19	
	Lower Speed	loaded/unloaded	455/475	455/475	
	Max. Drawbar Pull	loaded	460/480	435/480	
	Max. Gradeability	loaded/unloaded	1680	1680	
	Brakes	service		Foot/Hyd	Foot/Hyd
		parking		Hand /Mech	Hand /Mech
	Engine	manufacturer		Xinchai	Xinchai
		model		C490BPG	C490BPG
emission compliance			CHN Stage II	CHN Stage II	
cylinders			4	4	
displacement		liter	2.67	2.67	
rated power		kw/rpm	40/265	40/265	
max. torque		N.m/rpm	160/1900	160/1900	

Engine	Xinchai C490BPG	Xinchai A498BT1	Xinchai A498BPG-558	Isuzu C240-NBKEG-01-C3	Isuzu 4JG2-B-A-05-C2	Yanmar 4TNE98	Xinchai 4D27LPG	GCT GK25
	CHN Stage II	EU Stage IIIA	CHN Stage II	EU Stage III	EU Stage II	EU Stage IIIA	N/A	N/A
	40/2650	36.8/2400	45/2500	35.4/2500	46 kW /2450 r/min	43/2450	41/2500	35.9/2300(LPG) 37.4/2300(GAS)
3.0t	•	○	○	○	○	○	○	○
3.5t	•	○	○	○	○	○	○	○

